

RODENTICIDES, BAIT STATIONS AND COMPLEMENTS FOR THE RODENT CONTROL AND OTHER PROBLEMATIC VERTEBRATES

...desirable, effective and sure: the rodenticides Bleu Line give all these guarantees without compromises. All highly enriched by a series of items of complement for the professional rodent control and the control of other vertebrates professional and safety.

3 | **RODENT AND PROBLEMATIC VERTEBRATES CONTROL**

RODENT CONTROL AND PROBLEMATIC VERTEBRATES CONTROL FORMULATIONS

RODENTICIDES FORMULATIONS



CROSS-LINKED FILIA RODENTICIDE

Temperature resistant
from -50 °C to + 100 °C

Mix high palatability and high safety.



CREAM

COMPOSITION: animals and vegetable fats,
flours, dyes, preservatives, potato flours.



FRESH PASTA BAIT IN PAPER BAGS

COMPOSITION: animal fats and vegetable,
flours, dyes, oil, preservative.

DIMENSION: 5x7 cm.

WEIGHT: 12-15 g.

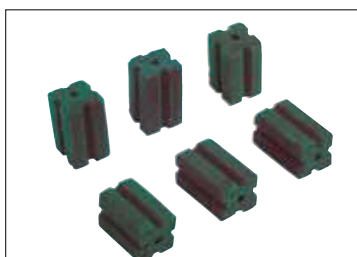


FRESH PASTA BAIT IN VACUUM TUB

COMPOSITION: animals and vegetable
fats, flours, dyes, oil, preservatives, potato
flours.

DIMENSION: 5,5 x 7,5 cm (internal)
11,5 X 9,5 cm (external) – 2 cm (h).

WEIGHT: 100 g.



RAT BLOCK COLD EXTRUSION

COMPOSITION: flour of wheat, grain, food
paraffin, fat animal and vegetable, sugar,
aromas and coloring.

DIMENSION: 2,6 cm x 2,6 x 4,5 cm (h).

WEIGHT: 30 g.

TOLERANCE: + /- 10%.



STICK COLD EXTRUSION WITH HOOK

COMPOSITION: flour of wheat, grain, food
paraffin, fat animal and vegetable, sugar,
aromas and coloring.

DIMENSION: 4,4 cm x 7 x 3 cm (h).

WEIGHT: 100 g tolerance + /- 10%.

RODENT CONTROL AND PROBLEMATIC VERTEBRATES CONTROL FORMULATIONS

New



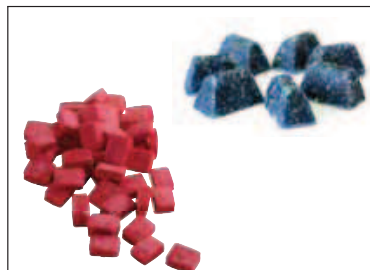
RAT BLOCK HOT EXTRUSION

COMPOSITION: flour of wheat, food paraffin, bow of bowline and coloring.

DIMENSION: 2,6 cm x 2,6 x 4,5 cm (h).

WEIGHT: 30 g.

TOLERANCE: + /- 10%.



WAX LUMPS

COMPOSITION: flour of wheat, food paraffin, bow of bowline and coloring.

DIMENSION: 1,6 cm x 2,2 cm x 14 cm (h).

WEIGHT: 3,5 g + /- 10%.

New



COMPRESSED OVULES

COMPOSITION: flour of wheat, food paraffin and dyes.

DIMENSION: 3 cm x 2 cm.

WEIGHT: 15 g tolerance + /- 10%.

New



IBITE - STICK BISCUIT STICK

COMPOSITION: flour of wheat, cereals, food paraffin, animal and vegetable fats, selected attractive, sugar, aromas and dyes.

DIMENSION: 2,5 cm (diameter) x 3 cm (h).

WEIGHT: 15 g.

TOLERANCE: + /- 10%.

YOU KNEW THAT...

DIFENABLEU iBITE is the new formulation rodenticide proposed by Bleu Line.

Its particular composition makes one of the most desirable rodenticides on the European market.

University tests have shown that DIFENABLEU iBITE has a 20% great desirability in comparison to the common baits in fresh pasta and of 40% in comparison to the wax blocks.

This is possible thanks to the optimal mix of the ingredients and the particular attractive that confer it an aroma and a taste "biscuit".

For this reason the particular formulation of DIFENABLEU iBITE is definibile as "biscuit stick".

DIFENABLEU iBITE has been projected to withstand extreme environmental conditions showing own abilities of maintenance of all the characteristics in a range of temperatures understood between 30 °C and 105 °C.

Besides it is able to preserve its own desirability for more than 14 days, in environment with a 80% constant relative damp way. The conducted tests as DIFENABLEU have also shown iBITE both able to withstand for over 5 days under conditions of partial immersion in water.

Realized for a control of mice and rapes, both in inside that in external, DIFENABLEU iBITE is characterized by a shape "polygonal", that allows to the rodent to have more stung of contact with the same bait, facilitating the consumption of it.

DIFENABLEU iBITE has a central hole, for a correct and sure position in the greatest part of the rodent bait station.

The scarce tackiness of the external part of DIFENABLEU iBITE prevents the environmental dusts to deposit on the bait, decreasing the desirability of it and preserving the good organoleptic characteristics.

This characteristic makes DIFENABLEU iBITE the ideal bait for the zootecnic environments and where generally there is a great quantity of environmental dusts.

HOUSE MOUSE (*Mus musculus*)



LENGHT: 10 cm
WEIGHT: 15-30 g

HABITAT

Generally indoors, preferring dry nesting locations. Limited home range, with foraging activities rarely above several meters from nest site. Nests are usually situated in close proximity to food sources. Nests are generally made of shredded paper and other materials present in the local environment.

BIOLOGY

Distinguished from rats by small size and from young rats by it's larger ears and longer tail. Little or no new object avoidance behaviour (neophobia). Nocturnal forager with a preference for grains and seeds. Longevity: 6 - 12 months, the maximum reproductive potential for 1 breeding pair being approximately 2000!

PEST STATUS

Widespread and relatively cosmopolitan, this species is a frequent pest of homes and industrial sites. Urinating frequently and feeding from multiple sites, food spoilage and the spread of disease is closely associated with *M. domesticus*.

CONTROL

The combined use of monitoring equipment, baits and physical control methods where appropriate is recommended. Bait formulation is an important factor, due to the high specificity of food selection by this species.

COMMON RAT (*Rattus norvegicus*)



LENGHT: 25-30 cm
WEIGHT: 300-500 g

HABITAT

Often found beside water, on the banks of streams and ditches. Sewers also provide habitat and access to street level feeding areas, particularly in cities.

BIOLOGY

Excellent senses of touch, taste, smell and hearing. Poor vision. Active burrower. Strong swimmer. New object wary (Neophobia). Food sources include garbage in urban areas and cereal or root crops in arable areas.

PEST STATUS

Main UK rat pest species. Increasingly important in urban areas, this specie has adapted readily to environments with close proximity to large human populations. Also problematic when newly introduced on small islands.

CONTROL

Usually involves use of well protected anticoagulant bait. Other means may be used, such as acute baits or physical control methods. Monitoring is also critical for successful management of common rat populations.

BLACK RAT (*Rattus rattus*)



LENGTH: 20 cm
WEIGHT: 150-300 g

HABITAT

Restricted in modern times in the UK to only a few areas. When found in buildings, the Black rat is most often sighted on roofs. Pipes, cables and beams offer means of distribution to this agile mammal which can jump over a meter in height from standing start.

BIOLOGY

Excellent senses of touch, taste, smell and hearing. Poor vision. Agile and active climber. Omnivorous, with a preference for fruit, nuts, grains and vegetables. Usually eats 25 - 28g per day. Historically associated with shipping, this specie is decreasingly prominent in the UK.

PEST STATUS

Greatly decreased in western Europe in modern times. This is most likely due to competition from increasing populations of *R. Norvegicus* which has been increasing it's distribution over the same period.

CONTROL

When necessary, means of control are similar to those for *R. norvegicus*.



ANTICOAGULANTS

Anticoagulants have been the turning point in the fight to the murid.

The reason of their success is tied to the delay in their action occurs, the absence of special flavors, with the low dose to use and there is a specific antidote.

Anticoagulants used for the production of rodenticide baits all belong chemically to 2 categories: coumarins and indandiones.

Their mechanism of action is still similar act in the liver as vitamin K antagonists by interfering with the synthesis of coagulation factors of blood vitamin K-dependent. The toxicity of different anticoagulant molecules is mainly due to their different ability to be metabolically degraded and removed with the feces or urine. Their work begins at least 3 days after ingestion, causing internal bleeding which weaken the animal.

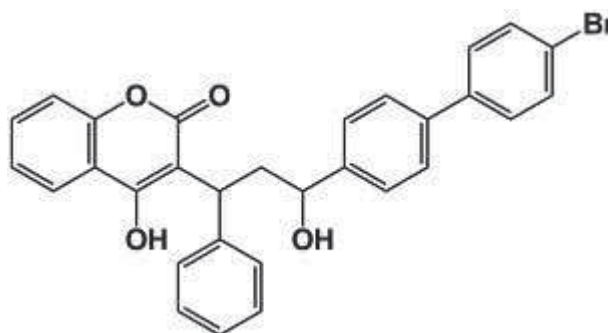
The weakness is that the animal reduces its activity and instead remains in its burrow. Vitamin K1 is the antidote to all anticoagulants.

PAY ATTENTION: The rapidity of action of anticoagulants is variable from a minimum 2/3 days to a maximum 12/15 days.

MAIN INGREDIENTS:

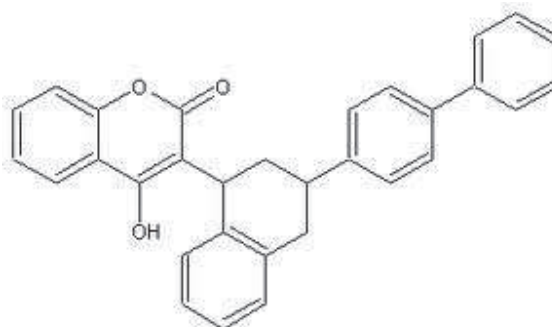
BROMADIOLON

Second generation efficient even with two small ingestion of bait. It is the most widely used active ingredient in Europe. Suitable for the disinfection of all murid pests.



DIFENACOUUM

It is usually with efficient two small ingestion of bait. It is an active ingredient with a selectivity among the highest, in fact, it turns out to be toxic in mice and rats and a little less on pets.

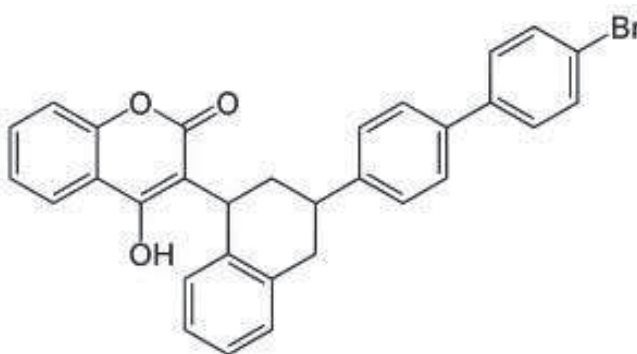


RODENT CONTROL AND PROBLEMATIC VERTEBRATES CONTROL

ANTICOAGULANTS

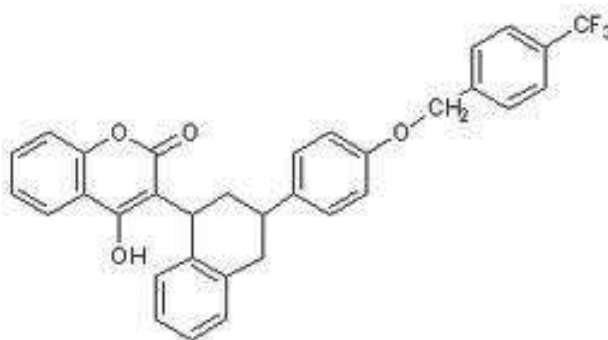
BRODIFACOUM

Powerful anticoagulant. It acts like other anticoagulants active, but when ingested it has a capacity to resist degradation much higher, so even a single ingestion is fatal to all strains resistant to anticoagulants currently known. The amount of bait needed to get the Brodifacoum, the lethal dose is very small and corresponds to less than 5% of daily food intake for both the rat and the mouse.



FLOCOUMAFEN

The active ingredient rodenticide that acts by interfering with the mechanism of blood clotting. It belongs to the group of second-generation anticoagulants and, unlike traditional rodenticides, it has an activity that can result in death from internal bleeding of the rodent within a period of three to ten days following a single ingestion. This will prevent the emergence of distrust of the bait from the other members of the colony.



RODENT CONTROL AND PROBLEMATIC VERTEBRATES CONTROL

BROMADIOLON



Bromobleu

Bromobleu

Italian Ministry of Health registration n°15462

READY-TO-USE RODENTICIDE BAIT THAT KILLS MICE AND RATS IN ONE INGESTION.

COMPOSITION 100 g:

- Pure bromadiolone 0,005 g
- Denatonium benzoate 0,001 g
- Appetizing and baiting substances to 100 g

CHARACTERISTICS:

BROMOBLEU is a ready-to-use rodenticide bait for domestic and civil use. It exterminates all species of mice, rats, field voles, etc. It becomes effective after one intake only, causing internal hemorrhages within a few days, and consequently the death without alerting the other rodents. Once poisoned, mice and rats feel suffocating and tend to die outdoors. BROMOBLEU contains denatonium benzoate as bittering component in order to minimize the risk of children and non-target animals' ingestion.

WAY OF EMPLOYMENT:

BROMOBLEU is a ready-to-use bait. For its use place 30 – 50 g of the bait in a suitable container in those places where rodents' presence is most likely: houses, warehouses, sewers, gutters, drains, livestock farms, etc. Replace the used bait until mice and rats have disappeared completely. Dead rodents must be frequently removed from the area and their carcasses shall be disposed in a safe way and not in litterbins or in dumps.

| ITEM | CODE | PACK |
|---|--------------|--------------|
| BROMOBLEU WAX RAT BLOCKS | 2-1-113-U | BOX OF 10 KG |
| BROMOBLEU WAX RAT BLOCKS COLD EXTRUSION | 2-188-9-1X15 | BOX OF 15 KG |
| BROMOBLEU WAX RAT BLOCKS WITH HOLE | 2-38-8-1X10 | BOX OF 10 KG |
| BROMOBLEU WAX LUMP | 2-324-2-1X10 | BOX OF 10 KG |
| BROMOBLEU FRESH PASTA BAIT IN PAPERBAGS | 2-188-9-1X20 | BOX OF 20 KG |
| BROMOBLEU FRESH PASTA BAIT IN PAPERBAGS | 2-188-8-1X5 | BOX OF 5 KG |



Difenableu

Difenableu

Italian Ministry of Health registration n° 15464

READY-TO-USE RODENTICIDE BAIT AGAINST ALL SPECIES OF MICE AND RATS FOR DOMESTIC AND CIVIL USE.

COMPOSITION 100 g:

| | |
|-------------------------------------|----------|
| - Pure difenacoum | 0,005 g |
| - Denatonium benzoate | 0,001 g |
| - Appetizing and baiting substances | to 100 g |

CHARACTERISTICS:

DIFENABLEU is a ready-to-use rodenticide bait for domestic and civil use. It exterminates mice, rats, field voles, etc. DIFENABLEU acts by ingestion causing death by internal hemorrhages within a few days, without alerting the other rodents: thus allowing a complete extermination. Once poisoned, even by a single ingestion, mice and rats feel suffocating and tend to die outdoors. DIFENABLEU contains denatonium benzoate as bittering component in order to minimize the risk of children and non-target animals' ingestion.

WAY OF EMPLOYMENT:

DIFENABLEU is a ready-to-use bait. For its use place 30 – 50 g of the bait in a suitable container in those places where rodents' presence is most likely: houses, warehouses, sewers, gutters, drains, livestock farms, etc. Replace the used bait until mice and rats have disappeared completely. Dead rodents must be frequently removed from the treated area and their carcasses shall be disposed in a safe way and not in litterbins or in dumps.

| ITEM | CODE | PACK |
|---|----------------|----------------------------|
| DIFENABLEU IBITE - STICK BISCOTTATO DA 15 G | 2-1-114-IBITE | BOX OF 10 KG |
| DIFENABLEU WAX RAT BLOCK OF 30 G | 2-1-120-U | BOX OF 10 KG |
| DIFENABLEU WAX RAT BLOCK OF 200 G | 2-1-120-U-200 | BOX OF 10 KG |
| DIFENABLEU WAX RAT BLOCK COLD EXTRUSION | 2-1-1-1X15 | BOX OF 15 KG |
| DIFENABLEU WAX STIC WITH HOLE | 2-38-7-1X10 | BOX OF 10 KG |
| DIFENABLEU WAX STICK WITH HOOK | 2-32-7-1X25 | SACK OF 25 KG |
| DIFENABLEU WAX LUMP | 2-324-1-1X10 | BUCKET/BOX OF 10 KG |
| DIFENABLEU FRESH PASTA BAIT IN PAPERBAGS | 2-188-7-1X20 | BOX OF 20 KG |
| DIFENABLEU FRESH PASTA BAIT IN PAPERBAGS | 2-188-7-1X5 | BOX OF 5 KG |
| DIFENABLEU FRESH PASTA BAIT IN TUB OF 100 G | 2-198-1-100X50 | BOX OF 50 TUB PAIR TO 5 KG |

RODENT CONTROL AND PROBLEMATIC VERTEBRATES CONTROL

BRODIFACOUM



Brodibleu

Brodibleu

Italian Ministry of Health registration n° 18542

READY-TO-USE RODENTICIDE BAIT FOR DOMESTIC AND CIVIL USE.

COMPOSITION 100 g:

- Pure Brodifacoum 0,005 g
- Denatonium benzoate 0,001 g
- Co-formulants and appetizing substances to 100 g

CHARACTERISTICS:

BRODIBLEU is a rodenticide bait effective against various species of rodents: common mice, black and sewer rats, etc. It is effective also against those rodents that are resistant to common anticoagulant rodenticides. One ingestion is enough to cause death and the product is effective even in small doses. Once it has ingested the formulation, the rodent dies slowly of internal hemorrhage, without alerting the other components of the colony. BRODIBLEU is used in the following places: houses, dumps, holds, sewers, barracks, warehouses, gardens, containers, freight cars, depots in general, food industries, drains, gutters, etc. BRODIBLEU contains denatonium benzoate as bittering component in order to minimize the risk of children and non-target animals' ingestion.

WAY OF EMPLOYMENT:

BRODIBLEU must be used in the following doses:

- against rats: put about 20-30 g bait in the containers and place them every 8-10 m.
- against mice: put about 10-20 g bait in the containers and place them every 3-4 m.

| ITEM | CODE | PACK |
|---|---------------|---------------|
| BRODIBLEU GRAIN IN SACHETS | 2-38-5-1X20 | BOX OF 20 KG |
| BRODIBLEU FLAKES | 2-188-3-1X20 | SACK OF 20 KG |
| BRODIBLEU WAX RAT BLOCK | 2-1-600-U | BOX OF 10 KG |
| BRODIBLEU RAT WAX BLOCKS COLD EXTRUSION | 2-188-10-1X15 | BOX OF 15 KG |
| BRODIBLEU WAX LUMP | 2-324-3-1X10 | BOX OF 10 KG |
| BRODIBLEU FRESH PASTA BAIT IN PAPERBAG | 2-188-9-1X20 | BOX OF 20 KG |
| BRODIBLEU FRESH PASTA BAIT IN PAPERBAG | 2-188-9-1X5 | BOX OF 5 KG |
| BRODIBLEU STICK WITH HOLE | 2-38-9-1x10 | BOX OF 10 KG |



Flocoumableu

Flocoumableu

Italian Ministry of Health registration n° 18620

READY-TO-USE RODENTICIDE BAIT AGAINST ALL SPECIES OF MICE AND RATS FOR DOMESTIC AND CIVIL USE.

COMPOSITION 100 g:

| | |
|-------------------------------------|---------------|
| - Pure Flocoumafen | 0,005 g |
| - Denatonium benzoate | 0,001 g |
| - Appetizing and baiting substances | q.s. to 100 g |

CHARACTERISTICS:

Flocoumafen interferes with blood coagulation. Second generation anticoagulants and unlike traditional anticoagulant rodenticides. It is effective after a single feed, causing mice and rats death after 7-10 days. This mode of action prevents fellow rodents from becoming suspicious towards the baits.

The rodents that have fed on Flocoumableu tend to lose their sense of orientation and therefore they move away from the place where have taken the bait.

The presence of denatonium benzoate in the product gives the bait a bitter taste which reduces the risk of accidental swallowing.

WAY OF EMPLOYMENT:

Place 2-3 baits in bait dispensing boxes or in other devices that protect the baits and discourage consumption by non-target animals. The baits must be placed in the infested places, close to their feeding sites if possible or, alternatively, along walls, along rodents' tracks, close to their furrows, in corners and under stacks of materials. Check the baits every 6-7 days and integrate them or renew them if necessary. Dead rodents must be burnt or buried to avoid secondary poisoning events. The presence of baits should be signalled by warning signs.

| ITEM | CODE | PACK |
|--------------------------------|------------|-----------------|
| FLOCOUMABLEU FRESH PASTA BAIT | 2-6-1-1X10 | BUCKET OF 10 KG |
| FLOCOUMABLEU COMPRESSED OVULES | 2-6-2-1X10 | BUCKET OF 10 KG |



RODENT CONTROL AND PROBLEMATIC VERTEBRATES CONTROL

VIRTUAL BAIT



Virtual Bait

Virtual Bait

READY-TO-USE RODENTICIDE BAIT AGAINST ALL SPECIES OF MICE AND RATS FOR DOMESTIC AND CIVIL USE.

CHARACTERISTICS:

VIRTUAL BAIT is an aromized bait without main ingredient inside.
Available in fresh pasta and in wax block.

VIRTUAL BAIT has function to monitor and locate the possible presence of rodents, it is used in all that environments whereas the rules want to avoid or limit the use of toxic baits (sensitive areas of alimentary industries, schools, hospitals etc.) and where these are not from the protocols haccp.

| ITEM | CODE | PACK |
|--------------|---------|-----------------|
| VIRTUAL BAIT | 2-188-1 | BUCKET OF 10 KG |



RODENT CONTROL AND PROBLEMATIC VERTEBRATES CONTROL

REPELLENT



Rodi Natural Stop



Rodi Natural Stop

RODI NATURAL STOP - UNBEARABLE TO WHATEVER RODENT.

GREAT AREAS

Ideal for firms and/or stores of alimentary commodities because it doesn't provoke the death of the rodent but free from their presence, avoiding all the problems' list of connected toxicology.

AGRICULTURAL AREAS

The damages in these areas can be notable since the seeding for the ability of the rodents to dig long galleries destroying ample areas. The product doesn't interfere on any type of crop (intensive, flowers, garden), it doesn't provoke damages to the vegetation and it doesn't pollute the water stratum.

STABLES AND STALLS

Rats aspire to colonize stables and stalls for the hospitable environment and the easy provisioning. They are surely one of the causes of epidemics and the potential vectors of numerous infectious illnesses as verminous, dermatofitosi, adenovirosi, leptospirosi, thrush epizootica, rickettsiosi, etc.

SAFETY

If accidentally comes to contact with pets, of courtyard or of breeding it doesn't result harmful. To soak in the refuges and the sites frequented by the rodents with you Rodi Natural Stop that it is not a food bait but a product to matrix exclusively vegetable. Undesirable and unbearable to the mice because it exploits some peculiar dowries of the rodents, or forms sense of the sense of smell and their habits ipogee to dig long and superficial galleries. The struggle to the rodents, generally with the normal raticides or baits and powerful poisons, has sometimes a big side effect considering that the "mice" they love to frequent the places where commonly the pets, the man and children live. The danger of such use is intrinsic and easily comprehensible. Besides, many active principles that are used in the baits are valid for some kinds while they are resulting entirely useless for others.

THE FORMULATION OF THE STRUGGLE

With Rodi Natural Stop is systematic and arrives to destroy the sites frequented by mice that become malodorous and not more attended, freeing definitely, without this gives noisy to the other animals and to the man. Such places are easily recognizable for the presence of bad odor, greasy (betalanolina), shit, refuges, nibbled.

The area to be treated is divided in the three zones:

- 1) risk zone
- 2) transit zone
- 3) infested zone

The ground and the refuges imbibe with Rodi Natural Stop (according to the formalities of use) make a disposition and impassable barrier that estranges them from that place exploiting to our proper advantage their dowries olfactive for a long time used for the survival. The course is centripetal and starts from the runs up to the site with dye transfer of the refuges.

DARK LIQUID: It is recommended use of the gloves in case of contact to avoid the characteristic odor. The product can leave a halo in the clear floors but it is easily washable. Shake before use and close again the package.

OIL GEL: distribute in the interested areas (1000 mls are enough for an application of around 20 linear meters).The particular composition lipophilic allows a lasting action in the time. For a preventive action, it is enough to distribute the product every 15 days.



| ITEM | CODE | PACK |
|-------------------|----------|--------|
| RODI NATURAL STOP | 3-1391-1 | 6 PCS. |

RODENT CONTROL AND PROBLEMATIC VERTEBRATES CONTROL

RAT BAIT STATION



New

Rodent Top Rat

Rodent Top Rat



RODENT TOP RAT – RAT BAIT STATION.

TECHNICAL CHARACTERISTICS:

material: polypropilene (hdpe)
dimension: 300 x 170 x h 100 cm

TARGET:

Rattus rattus (L), *Rattus norvegicus* (Berken), *Mus musculus* (Schwarz & Schwarz)

DESCRIPTION:

RODENT TOP RAT is the rodenticide safety bait station for mice and rats control of inside and external areas.

Versatile and proper for any type of rodenticide thanks to the inside tray removable for the use of fresh pasta bait, liquid, grain and thanks to the 3 safety pivots for the fixing of the wax blocks. This bait station is endowed with a universal plastic key that allows the opening and the inspection only to the specialized and competent personnel (professional pest control operator).

FORMALITY OF EMPLOYMENT:

Open the cover of the bait station using the special key in endowment.
Insert inside the bait/poison, using the gloves.
Close the cover and fix the bait station to wall, floor or to the pole.
Position the bait station avoiding obstruct the holes of entry.

WAY OF EMPLOYMENT:

For rodent control in inside and external areas.

| ITEM | CODE | PACK |
|----------------|----------------|----------------|
| RODENT TOP RAT | 12-1206-1-1X24 | BOX OF 24 PCS. |

Roky Mouse Bait Box

Roky Mouse Bait Box

ROBUST, COMPACT CONSTRUCTION.

- Tamper resisting lock.
- Hygienic and easy to clean.
- Twin bait chambers maximise efficacy.

TARGET:

Mus musculus (Schwarz & Schwarz)

DIMENSION:

10 cm x 5 cm x 4 cm (h)

The Roguard Mouse Bait Box is a robust budget mouse box to use with all formulations. Its compact polypropylene construction means it can be used in tight areas and it is hygienic and easy to clean.

Roguard Mouse Bait Box has a tamper-resisting lock with a dedicated key, facilitating rapid inspection and bait replacement. The twin bait reservoirs ensures that bait is constantly on offer to the mice promoting maximum efficacy.



| ITEM | CODE | PACK |
|---------------------|-----------|-----------------|
| ROKY MOUSE BAIT BOX | 12-82-513 | BOX OF 100 PCS. |



RODENT CONTROL AND PROBLEMATIC VERTEBRATES CONTROL

RAT BAIT STATION

New

Rodent Stop LP

Rodent Stop LP



RODENTSTOP LP – RAT BAIT STATION.

DIMENSION: 33,5 x 22,5 x 8,3 cm (h)

TARGET:

Rattus rattus (L), *Rattus norvegicus* (Berken), *Mus musculus* (Schwarz & Schwarz)

RODENTSTOP LP is a trapezoidal shaped, mouse and rat size bait station that fits as in the corners as along walls where mice and rats walk.

It is ideal for indoors use under pallets and for other usual baiting locations. RODENTSTOP LP can hold wax blocks of every typology, fresh pasta bait, liquid baits, grain etc.

Wax blocks can fit in horizontal and vertical bait rods that help keep bait safety inside the station.

RODENTSTOP LP closes automatically and unlocks with a special 2 metal keys.

| ITEM | CODE | PACK |
|---------------|---------------|---------------|
| RODENTSTOP LP | 12-1246-3-1X6 | BOX OF 6 PCS. |

Uv Bait Box for Rats

Uv Bait Box for Rats Transparent



UV BAIT BOX FOR RATS.

DIMENSION: 32,5 x 25,5 x 15,5 cm

Bait box for rats, for external and internal use, allowing economical and safe use. The box is made of weather-proof hard plastic (polypropylene). Consumption by rodents may be checked easily via the translucent lid and the completely transparent peepholes.

The solution is tamper-proof as the box can be locked with a key sold with the package. Removable feeding tray and metal holder for paraffin cube are included. Special price on the brown colour.

| ITEM | CODE | PACK |
|----------------------------------|-------------|----------------|
| UV BAIT BOX FOR RATS TRANSPARENT | 12-142-1002 | BOX OF 10 PCS. |

Rodent Stop Erogatore

Rodent Stop Erogatore 

RODENTSTOP EROGATORE – RAT BAIT STATION.

TECHNICAL CHARACTERISTICS:

Material: polypropilene (hd)

Dimension: 33,2 x 14,2 x h 11,2 cm

TARGET:

Rattus rattus (L), *Rattus norvegicus* (Berken), *Mus muscules* (Schwarz & Schwarz)

DESCRIPTION:

Rat bait station in polypropilene HD of black color for the control of mice and rapes. On request with a minimum order of 1008 pcs available also transparent colour.

Unassailable from the atmospheric agents and to the particularly cold temperatures, ideal for inside and external environments.

Opening with special safety key “triangular shape” and system of fixing versatile for every condition of use.

The inner surface completely free from encumbrances to facilitate to the operators the cleaning.

Inside there is a polyvalent tray (manger) in plastic adapt for every type of rodenticide (fresh pasta bait, wax block, grain, etc.)

Possibility to use in alternative the glue board whereas forbidden the use of the odenticide.



| ITEM | CODE | PACK |
|-----------------------|----------------|----------------|
| RODENT STOP EROGATORE | 12-1206-2-1X12 | BOX OF 12 PCS. |

Rat Trap

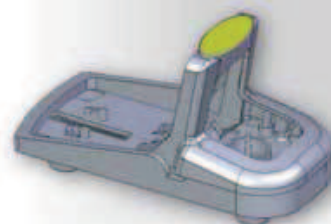
Rat Trap

RAT TRAP.

DIMENSION: 14 x 8 x 7 cm

Easy-to-clean guillotine trap for rats, composed of plastic and metal parts. Touching the dead animal is not necessary. Safe use in bait boxes, for locations where baiting is not allowed.

The model has four entrance holes (ø:7mm) thus may be fixed on pipes or beams which are suspected to serve as routes for rats. No special bait needed for success.



RODENT CONTROL AND PROBLEMATIC VERTEBRATES CONTROL

MOUSE BAIT STATION



Ristoratrap

Ristoratrap – Mouse Bait Station



RISTORATRAP – MOUSE BAIT STATION.

TECHNICAL CHARACTERISTICS:

Material: polypropilene (hdpe)
Dimension: 220 x 145 x 65 mm (h)
Dimension of the specific glue board for Ristoratrap: 157 x 93 mm
Colour: black

TARGET: *Mus musculus* (Schwarz & Schwarz)

TECHNICAL SPECIFICATIONS:

TWO MONITORING PLANES:

- Lower for creeping insects (cockroaches) and upper for rodents
- Can be ground fixed
- Safety closure with key

WAY OF EMPLOYMENT:

POSITION RISTORATRAP

- near doors and crevices,
- along the perimeter of food industries (in order to create a rodent-proof barrier),
- in warehouses,
- the back of supermarkets,
- in goods handling areas,
- in recycling areas,
- in green areas where the presence of uncultivated grass may attract rodents.

Recommended distance between 2 bait stations: 10 m.

| ITEM | CODE | PACK |
|----------------------------------|--------------|----------------|
| RISTORATRAP - MOUSE BAIT STATION | 12-1168-1X12 | BOX OF 12 PCS. |

Uv Bait Box for Mice

Uv Bait Box for Mice Transparent



UV BAIT BOX FOR MICE.

DIMENSION: 12,5 x 9,5 x 4 cm

Polypropylene monitoring tool allowing economical and safe use. Consumption by mice may be checked easily and without opening the box via the transparent lid. The solution is tamper-proof as the box can be locked with a key sold with the package.

| ITEM | CODE | PACK |
|----------------------------------|-------------|----------------|
| UV BAIT BOX FOR MICE TRANSPARENT | 12-142-1001 | BOX OF 80 PCS. |

RODENT CONTROL AND PROBLEMATIC VERTEBRATES CONTROL

RAT BAIT STATION

Ristoramatic

Ristoramatic

RISTORAMATIC – MOUSE/RAT BAIT STATION.

TECHNICAL CHARACTERISTICS:

Material: polypropylene (hdpe)
Dimension: 37 x 4,5 (diameter) cm / 25 x 5,5 (diameter) cm
Colour: black

TARGET:

Rattus rattus (L), *Rattus norvegicus* (Berken), *Mus musculus* (Schwarz & Schwarz)

RISTORAMATIC is a rat poison bait dispenser made of polypropylene with a characteristic upside down "T" shape.

Fitted with a loader and safety cap with key, extremely easy to install, it does not cover any walking surface, it cannot be accessed by children or pets.

| ITEM | CODE | PACK |
|-----------------------------|---------------|----------------|
| RISTORAMATIC BLAK | 12-946-1-1X10 | BOX OF 10 PCS. |
| FIXING KIT FOR RISTORAMATIC | 12-21-246F | BOX OF 2 PCS. |



Irto Trio Rat Snap Trap

Irto Trio Rat Snap Trap

IRTO TRIO RAT SNAP TRAP .

TECHNICAL CHARACTERISTICS:

Dimensions: 14 x 8 x 7 cm
Material: plastic

The Irto Trio Rat snap trap is truly a "better rat snap trap". Easy to bait. Easy to set. Easy to release. Escape proof and you never touch another mouse. The mechanism is smart, the materials are rugged. Irto Trio Rat traps are easy to use and made to last. Use them year after year.

They're safe, simple and sanitary (if used inside the UV BAIT BOX FOR RATS become the ideal system for the alimentary industries). Steel and durable polystyrene materials make them tough. Smart engineering - including a larger trip paddle and strike bar - makes them work every time. Place the baited Irto Trio Rat snap traps near a wall (or inside UV BAIT BOX FOR RATS) and pull back on the upright bar until it locks firmly in catch. The vertical strike bar travels half the distance of old-fashioned wooden traps. The extra-large trip paddle and strike bar catch rodents from the front, sides and back. To release, simply pull back on the upright bar until mouse is released. Fingers never touch the mouse.

| ITEM | CODE | PACK |
|-------------------------|-------------|----------------|
| IRTO TRIO RAT SNAP TRAP | 12-142-1004 | BOX OF 10 PCS. |



RODENT CONTROL AND PROBLEMATIC VERTEBRATES CONTROL

INNOVATIVE TRAP



Nooski Trap System

Nooski Trap System



NOOSKI TRAP SYSTEM.

The NOOSKI Trap System is an innovative leap in design, introducing significant features and benefits over existing traps and poisons.

NOOSKI provides a serious alternative for successful rodent control. No more jammed fingers, no more misfires and no more poisoning the environment.

The NOOSKI Trap System utilizes an expandable rubber latex ring. When the rodent enters the trap, the ring is released onto the rodents neck/chest area causing the rodent to spring free of the trap and die quickly and humanely a few feet away. Unlike conventional snap traps that regularly misfire or maim rodents the NOOSKI System cannot misfire and it is lethal every time.

The NOOSKI Trap System has been tested by Landcare Research New Zealand on wild-caught norway rats and passed the welfare guidelines for kill traps set by the National Animal Welfare Committee NAWAC.

THE NOOSKI ADVANTAGE

- Guaranteed lethal, No misfires
- Kills quickly and humanely
- Quick, easy and safe to use
- No more jammed fingers
- Safer to use around children and pets
- No mess, rodent dies away from trap
- No rust, stainless steel spring
- Environmentally friendly, no poison
- Multi-bait design
- Bait lasts longer with tunnel design
- Can be set on ground or in trees
- Tunnel design reduces trap shyness
- A complete system, not just a trap
- Multi-animal design, Target Specific rodents, squirrels, etc.

SAFE

No more jammed fingers and no more poisoning the environment. The NOOSKI Trap is considerably safer than poisons and snap traps with nothing more than a tingling sensation if released onto your finger. However, as with any kill trap care needs to be taken around children and pets.

CLEAN

No more old bait to clean from your trap or half decomposed rodent to remove. No more poisoned rats dying in your ceiling or under the house. Simply pick up the dead rodent and dispose. The trap will always remain free of blood and potentially harmful diseases carried by rodents.

EASY

Although the NOOSKI system is made up of several components, the trap is significantly easier and quicker to load and bait than conventional traps. The unique trigger mechanism means no more traps firing off when placed in position or applying the bait.

| ITEM | CODE | PACK |
|------------------------|------------------|-----------------|
| NOOSKI RAT TRAP SYSTEM | 12-NOOSKI-RAT | BOX OF 12 PCS. |
| NOOSKI MOUSE SYSTEM | 12-NOOSKI-MOUSE | BOX OF 20 PCS. |
| NOOSKI REFILL (rings) | 12-NOOSKI-REFILL | BOX OF 20 RINGS |

RODENT CONTROL AND PROBLEMATIC VERTEBRATES CONTROL

MULTIPLE CATCH MOUSE TRAPS



Multiple Catch Mouse Trap - Clear Lid

Multiple Catch Mouse Trap

MULTIPLE CATCH MOUSE TRAP - CLEAR LID.

TECHNICAL FEATURES:

Material: galvanized steel or plastic
Dimension: 27 x 17 x 6,5 cm (h)

TARGET:

Mus musculus (Schwarz & Schwarz)

Our trap is constructed with a balance mechanism and it can catch up to 25 mice.

Top-quality galvanized steel, it is ideal for HACCP rodent monitoring. A glue trap with attractant can be placed inside the trap, to remove caught mouse easily.

It can be customized with your company logo and printed in 1 colour (at your choice) on the lid.

CATCHMASTER 72TC replacement glue board.



| ITEM | CODE | PACK |
|--|----------------|----------------|
| MULTIPLE CATCH MOUSE TRAPS CLEAR LID | 12-1455-2-1X12 | BOX OF 12 PCS. |
| MULTIPLE CATCH MOUSE TRAPS CLEAR LID PLASTIC | 12-1247-1-1X12 | BOX OF 12 PCS. |

Irto Trio Safety

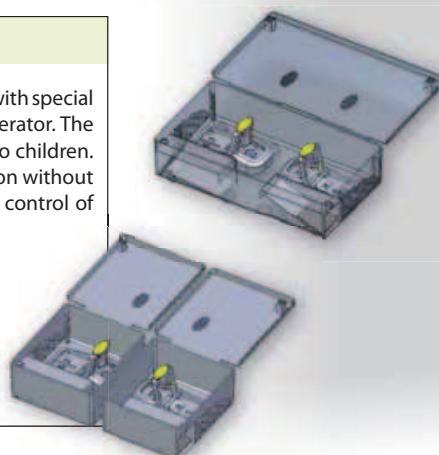
Irto Trio Safety

IRTO TRIO SAFETY STATION FOR THE LODGING OF THE SNAP TRAPS.

Special safety station for the lodging of the snap traps. Endowed with closing with special key so that cannot be open if it is not from the professional pest control operator. The special vain inside allows to lodge the snap trap without creating dangers to children. A small transparent hole in the cover of the station allows the rapid inspection without seeing the carcass of the mouse or dead rape but only the yellow color as control of possible captures. Usable also as safety rodent (mouse and rat) bait station. Perfect for the Alimentary Industries!

TECHNICAL CARD:

Material: PP Tipplen K395
Cover: PP Tipplen R359
Dimension: 14,3X26,2 cm (h)



RODENT CONTROL AND PROBLEMATIC VERTEBRATES CONTROL

MULTIPLE CATCH MOUSE TRAPS



Rodent Stop Mini

Rodent Stop Mini - Universal - Ultra



RODENTSTOP Mini.

Material: card board
Glue: banana flavor
Dimension: 240 x 100 mm



Glue trap to catch rodents. Place the trap along the habitual passages of rodents ex: beside walls, under pallets, under elevations, electric panels, technical rooms, warehouse.

TARGET:

Mus domesticus and small rodents.

| ITEM | CODE | PACK |
|-----------------|-----------|-----------------|
| RODENTSTOP MINI | 12-15-420 | BOX OF 140 PCS. |



RODENTSTOP Universal.

Material: card board
Glue: banana flavor
Dimension: 157 x 93 mm



Glue trap to catch rodents. Place the trap along the habitual passages of rodents ex: beside walls, under pallets, under elevations, electric panels, technical rooms, warehouse.

TARGET:

Mus domesticus and small rodents.

| ITEM | CODE | PACK |
|----------------------|----------|-----------------|
| RODENTSTOP UNIVERSAL | 6-14-700 | BOX OF 140 PCS. |



RODENTSTOP Ultra.

Material: cardboard
Glue: nut butter flavor
Dimension: 215 X 130 cm



Non-poisonous mouse and insect glue traps with a nut butter fragrance. Great for trapping mice, fruit flies, grain moths, cockroaches, crickets and other insects. RODENTSTOP ULTRA glue boards can lie completely flat like a sheet, better for catching mice or you can fold them to form a square box that protects the glue from falling objects and dust. Great for use in homes, restaurants, bars, offices, etc.

TARGET:

Mus domesticus and small rodents.

| ITEM | CODE | PACK |
|------------------|----------|-----------------|
| RODENTSTOP ULTRA | 6-14-701 | BOX OF 140 PCS. |

Selecta Mouse Glue

It is a non poisonous mouse and rat killing glue of great efficacy and easy to use.

It must be spread on a piece of board or cardboard and put in the area where the mice and rats move; they get stuck to the board.
Some baits (cheese etc.) can be put on the support as to attract the animals.

Put in front of the opening of holes, it stops insects, lizards and small animals.

Being atoxic, it can be used everywhere without any danger.
Eventual staining can be cleaned with petrol.

Available also with private label.

Selecta Mouse Glue



| ITEM | CODE | PACK |
|--------------------|--------------|--------------------------------|
| SELECTA MOUSE GLUE | 6-30-ATRARAT | BOX OF 100 CARTRIDGES OF 135 G |



RODENT CONTROL AND PROBLEMATIC VERTEBRATES CONTROL

CATCH MASTER GLUE BOARDS



CATCHMASTER GLUE BOARDS

THE GLUE FORMULAS IN CATCHMASTER GLUE BOARDS ARE EFFECTIVE FOR AT LEAST ONE YEAR IN A HOME SCENARIO AND FOR FIVE YEARS UNOPENED IN A WAREHOUSE LOCALE.

Catchmaster 72MB



Catchmaster 72MB

CATCHMASTER 72MB.

These insect glue boards are perfect for mice, spiders, scorpions and other crawling insects strongest glueboards on the market. Non-poisonous cardboard glue trap that captures mice, roaches and insects on contact. A special release paper protects the glue until the board is used. Place CATCHMASTER 72 MB flat against walls or corners.

| ITEM | CODE | PACK |
|-------------------------|---------------|---------------------------|
| CATCHMASTER 72 MB | 6-16-72 | BOX OF 72 PCS. OF 2,04 KG |
| CATCHMASTER 72 MB EXTRA | 6-16-72 EXTRA | BOX OF 72 PCS. OF 2,27 KG |
| CATCHMASTER 72 MB SUPER | 6-16-72 SUPER | BOX OF 72 PCS. OF 2,72 KG |

Catchmaster 72 TC



Catchmaster 72TC

CATCHMASTER 72TC.

The CatchMaster 72TC is Ideal for any IPM program. This Glue Board can be used in the CatchMaster Multi-Catch trap and in other competitive traps like the Victor Tin Cat and the Kness Pro-Ketch.

The CatchMaster 72 TC can be used like any other CatchMaster Glue Board, under sinks for mice, behind sofas for spiders and other pests. CatchMaster 72 TC is great for use in small tight areas where you do not need the bulk of the bigger glue traps.

| ITEM | CODE | PACK |
|-------------------|------------|----------------|
| CATCHMASTER 72 TC | 6-16-72-TC | BOX OF 72 PCS. |

RODENT CONTROL AND PROBLEMATIC VERTEBRATES CONTROL

CATCH MASTER GLUE BOARDS

Catchmaster Rat Glue Board 60 RBGL

Catchmaster Rat Glue Board 60 RBGL

CATCHMASTER RAT GLUE BOARD 60 RBGL.

Catchmaster glue traps are ideal for catching rodents in areas where poisons or spring traps are dangerous, such as, homes, children's play areas, schools, hospitals, restaurants and in areas where pets are found.

- No springs to snap
- Child safe
- No messy bait needed
- No rodents dying in walls
- Non-toxic-ready to use
- Clean and easy disposal
- Amazing non-drying glue which does not run in hot weather 60 RBGL Rat Board.

The most effective and economical glue-integrated attractant. The competition's surface applied scent oils destroy their adhesive's efficacy. CATCHMASTER 60 RBGL's attractants are built into the glue. Cut easily for contour application with quick release paper in place and soapy or oiled scissors, customizing is a snap.



| ITEM | CODE | PACK |
|------------------------------|---------|----------------|
| CATCHMASTER RAT GLUE 60 RBGL | 6-16-60 | BOX OF 60 PCS. |

Catchmaster Rat Glue Tray 48RNHP

Catchmaster Rat Glue Tray 48RNHP

CATCHMASTER RAT GLUE TRAY 48RNHP.

Non-poisonous pre-baited glue boards come with 2 catch trays per package. Catchmaster 48R Glue Boards are great for roof rat control.

Catches: rats, snakes, mice, fleas, ticks, mites, lice, roaches, scorpions, brown recluse and other spiders.

Catchmaster 48R Rat Glue Boards

- Amazing non-dry glue with instant catch on contact, strongest adhesive available
- Can trap more than one rat at a time and hold at least 8 mice and hundreds of insects
- Clean and easy disposal
- No rodents dying in the walls
- Ready to use
- No springs to snap fingers
- Child safe

Non-poisonous CatchMaster Glue board. This Glue Board is great for trapping rats, squirrels, mice, snakes, and other large rodents. The Catchmaster Glue Boards are great for use at homes, restaurants, bars, offices, and many other areas.



| ITEM | CODE | PACK |
|-----------------------------|-------------|---------------|
| CATCHMASTER RAT GLUE48 RNHP | 6-6-48-RNHP | BOX OF 24 SET |

RODENT CONTROL AND PROBLEMATIC VERTEBRATES CONTROL ULTRASOUND REPELLENT SYSTEM

Transonic Pest Repeller – 45 m²



TRANSONIC PEST REPELLER – 45 m²

TRANSONIC PEST REPELLER – 45 m².

- Chases small rodents (mice, field mice, ...) fleas, ticks, spiders, many crawling insects.
- Protects an area of maximum 45m².

The protected area is diminished slightly if the room is heavily furnished with soft or porous materials.

- Plugs directly into the socket.
- Visible results after 72 hours.
- Consumption: max 0,7 watts.
- LED.
- Available in 1-pack or 3-pack.

| ITEM | CODE | PACK |
|---|------------|-------------|
| TRANSONIC PEST REPELLER – 45 m ² | 9-10-ULTRA | SINGLE PACK |

Transonic 1000 – 90 m²



TRANSONIC 1000 – 90 m²

TRANSONIC 1000 – 90 m².

- Chases small rodents (mice, field mice, ...) fleas, ticks, spiders, many crawling insects
- Protects an area of maximum 90m². The protected area is diminished slightly if the room is heavily furnished with soft or porous materials.

- Plugs directly into the socket.
- Visible results after 72 hours.
- Consumption : max. 0,8 watts.
- LED.
- Built-in nightlight.

| ITEM | CODE | PACK |
|----------------|------------|-------------|
| TRANSONIC 1000 | 9-10-0180E | SINGLE PACK |

Transonic 220 – 140 m²



TRANSONIC 220 – 140 m²

TRANSONIC 220 – 140 m²

- Chases small rodents (mice, field mice, ...) fleas, ticks, spiders, many crawling insects
- Protects an area of maximum 140m². The protected area is diminished slightly if the room is heavily furnished with soft or porous materials.

- Plugs in with a 2m power cord permitting ideal placement of the unit. The WK0220 can also run a short time on a 9V battery (+/- 3 days).
- Range of settings possible for increased effectiveness.
- Consumption : 0,3 watts.
- Visible results after 72 hours.
- LED.

| ITEM | CODE | PACK |
|---------------|------------|-------------|
| TRANSONIC 220 | 9-10-0200E | SINGLE PACK |

RODENT CONTROL AND PROBLEMATIC VERTEBRATES CONTROL

ULTRASOUND REPELLENT SYSTEM

TRANSONIC 240 – 60 m² BATTERY OPERATED

TRANSONIC 240 – 60 M² BATTERY OPERATED.

- Chases small rodents (mice, field mice...) fleas, ticks, spiders, many crawling insects
 - Protects an area of maximum 60 m². The protected area is diminished slightly if the room is heavily furnished with soft or porous materials.
 - Battery operated. Requires 4 x "C" good quality batteries. - Battery life up to 90 days.
 - Visible results after 72 hours.
 - LED.
- Ideal for spaces without electrical current (garden sheds, attics, cellars, vacation homes...).

| ITEM | CODE | PACK |
|---------------|-----------|-------------|
| TRANSONIC 240 | 9-10-0240 | SINGLE PACK |

Transonic 240 – 60 m² battery operated



TRANSONIC 300 – 280 m²

TRANSONIC 300 – 280 m².

- Chases RATS, mice, fleas, ticks, spiders, many crawling insects.
- Protects an area of maximum 280m². The protected area is diminished slightly if the room is heavily furnished with soft or porous materials.
- Plugs in with a 2m power cord permitting ideal placement of the unit. The WK0220 can also run a short time on a 9V battery (+/- 3 days).
- 2 loudspeakers for maximum performance.
- Range of frequency settings possible for increased effectiveness.
- Visible results after 72 hours; 2 weeks for results against rats.
- Consumption: max. 2,3 watts.
- LED.
- Audible on certain settings.

| ITEM | CODE | PACK |
|---------------|-------------|-------------|
| TRANSONIC 300 | 9-10-0300RE | SINGLE PACK |

Transonic 300 – 280 m²



TRANSONIC CIX – 325 m²

TRANSONIC CIX – 325 m².

- Chases rats, mice, fleas, ticks, spiders, many crawling insects.
- Protects an area of maximum 325m². The protected area is diminished slightly if the room is heavily furnished with soft or porous materials.
- Professional Quality – metal housing for exceptional resistance.
- Uses an 220-240V adaptor (included) with a power cord permitting ideal placement of the unit.
- Wide range of frequency settings for increased effectiveness.
- Visible results after 72 hours; 2 weeks for results against rats.
- Consumption : max. 0,4 watts.
- LED.
- Audible on certain settings.

| ITEM | CODE | PACK |
|---------------|------------|-------------|
| TRANSONIC CIX | 9-10-0600E | SINGLE PACK |

Transonic cix – 325 m²



RODENT CONTROL AND PROBLEMATIC VERTEBRATES CONTROL ULTRASOUND REPELLENT SYSTEM

Transonic yard garden protector



TRANSONIC YARD GARDEN PROTECTOR

TRANSONIC YARD GARDEN PROTECTOR.

- Chases dogs, cats, martens, rabbits, foxes, etc ...
- Protects up to 200 m².
- Required 4 "D" batteries (Normal Battery life: 4-6 months).
- 7 adjustable frequencies settings.
- Water resistant. Withstands rain, snow and low temperatures.
- Infrared detection at a 90° angle and at a distance of 16 meters.
- LED lights during ultrasound emission.
- Easy to install using accessories (included).

| ITEM | CODE | PACK |
|---------------------------------|------------|-------------|
| TRANSONIC YARD GARDEN PROTECTOR | 9-10-0040E | SINGLE PACK |

Transonic mole & gopher repeller



TRANSONIC MOLE & GOPHER REPELLER

TRANSONIC MOLE & GOPHER REPELLER.

- Chases moles and other burrowing rodents.
- Protects up to 100 m².
- Requires 4 "D" batteries (normal battery life is 4-6 months).
- Emits a series of sequential sound up to 125 db .
- Installs directly into the molehill.

| ITEM | CODE | PACK |
|-------------------------|-----------|-------------|
| TRANSONIC MOLE & GOPHER | 9-10-0675 | SINGLE PACK |



Transonic solar mole repeller



TRANSONIC SOLAR MOLE REPELLER

TRANSONIC SOLAR MOLE REPELLER.

- Chases moles and other burrowing rodents.
- Protects up to 350 m².
- Integrated solar panel – no batteries needed!
- Emits sequential sounds and vibrations.
- Installs directly in the mole gallery.

| ITEM | CODE | PACK |
|----------------------------|-----------|-------------|
| TRANSONIC MOLE REPEL SOLAR | 9-10-0677 | SINGLE PACK |